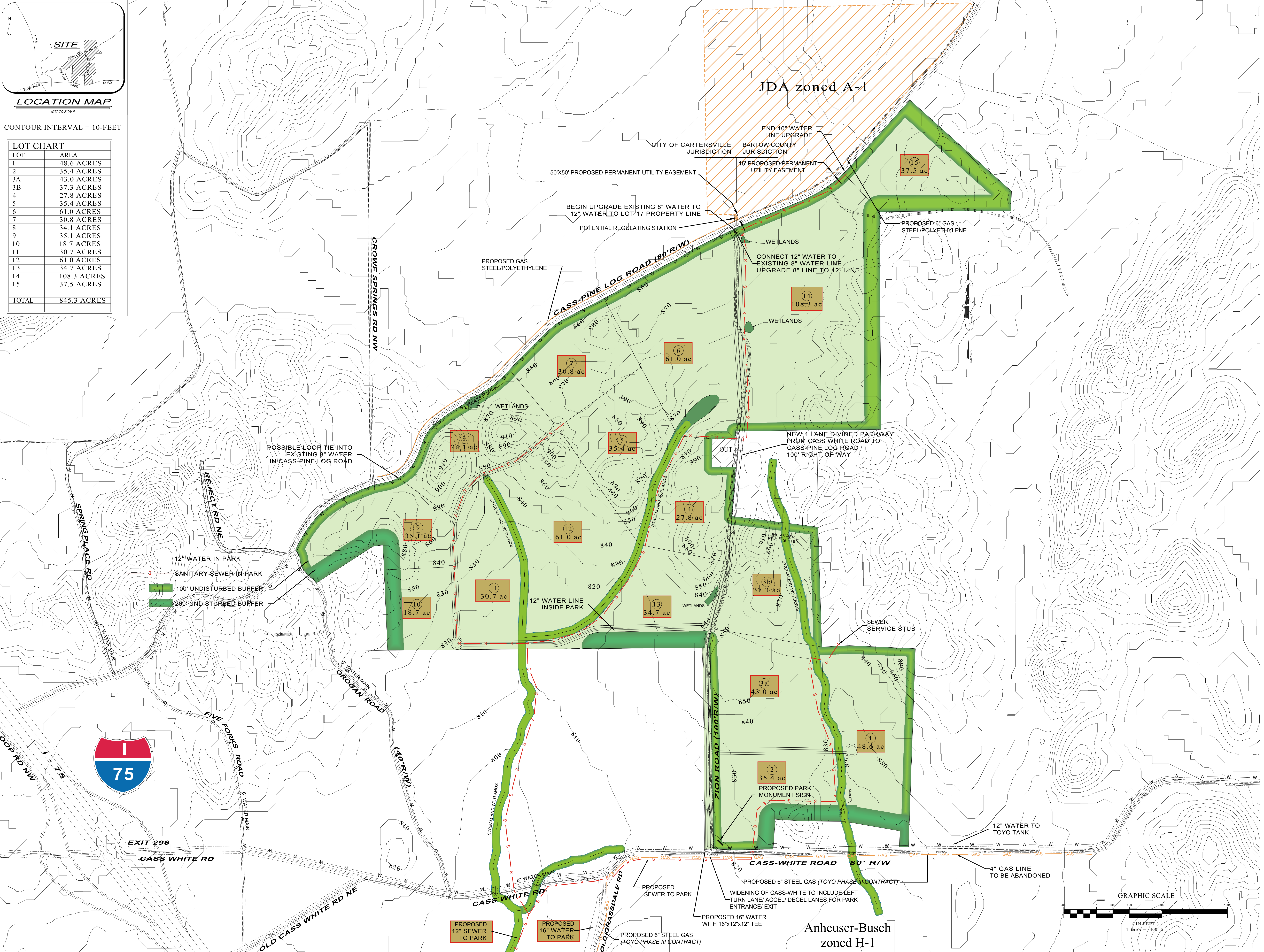


CONTOUR INTERVAL = 10-FEET

LOT	AREA
1	48.6 ACRES
2	35.4 ACRES
3A	43.0 ACRES
3B	37.3 ACRES
4	27.8 ACRES
5	35.4 ACRES
6	61.0 ACRES
7	30.8 ACRES
8	34.1 ACRES
9	35.1 ACRES
10	18.7 ACRES
11	30.7 ACRES
12	61.0 ACRES
13	34.7 ACRES
14	108.3 ACRES
15	37.5 ACRES
TOTAL	845.3 ACRES



E&A
EBERLY & ASSOCIATES

TEL: 770.452.7849 FAX: 770.452.0086
1852 CENTURY PLACE SUITE 202
ATLANTA, GEORGIA 30345
WWW.EBERLY.NET

- LAND PLANNING
- CIVIL ENGINEERING
- LANDSCAPE ARCHITECTURE

PROJECT: **HIGHLANDS 75**
CORPORATE PARK

LAND LOTS 189, 208, 209, 224, 225, 226, AND 243
5TH DISTRICT-3RD SECTION
BARTOW COUNTY, GEORGIA

REVISIONS:

DATE	LOT REVISION
8/9/05	LOT REVISION
9/14/05	ADDED PARCEL
9/21/05	Concept Utility Plan
10/19/05	Owner Revision
12/14/05	Owner Revision
5/01/06	Owner Revision
12/01/06	Added Gas Line
05/15/07	Acreage Revision
12/04/08	Rollins Revision

CONCEPT LOT PLAN

SCALE:	1"=400'
DATE:	05-10-05
DRAWN BY:	JEFF GWATHNEY
PROJECT MANAGER:	SCOTT GARDNER
QA/QC CHECK:	

PROJECT NO. **05-056**

M-1

FILE NAME: G:\PROJECTS\2005\05-056 CARTERSVILLE IND PARK\Drawings\05-056-M-12-04-08.dwg December 09, 2008 - 11:31am sgardner